

# Quardeck

FRIENDS OF HMS TRINCOMALEE

---

Autumn 2013

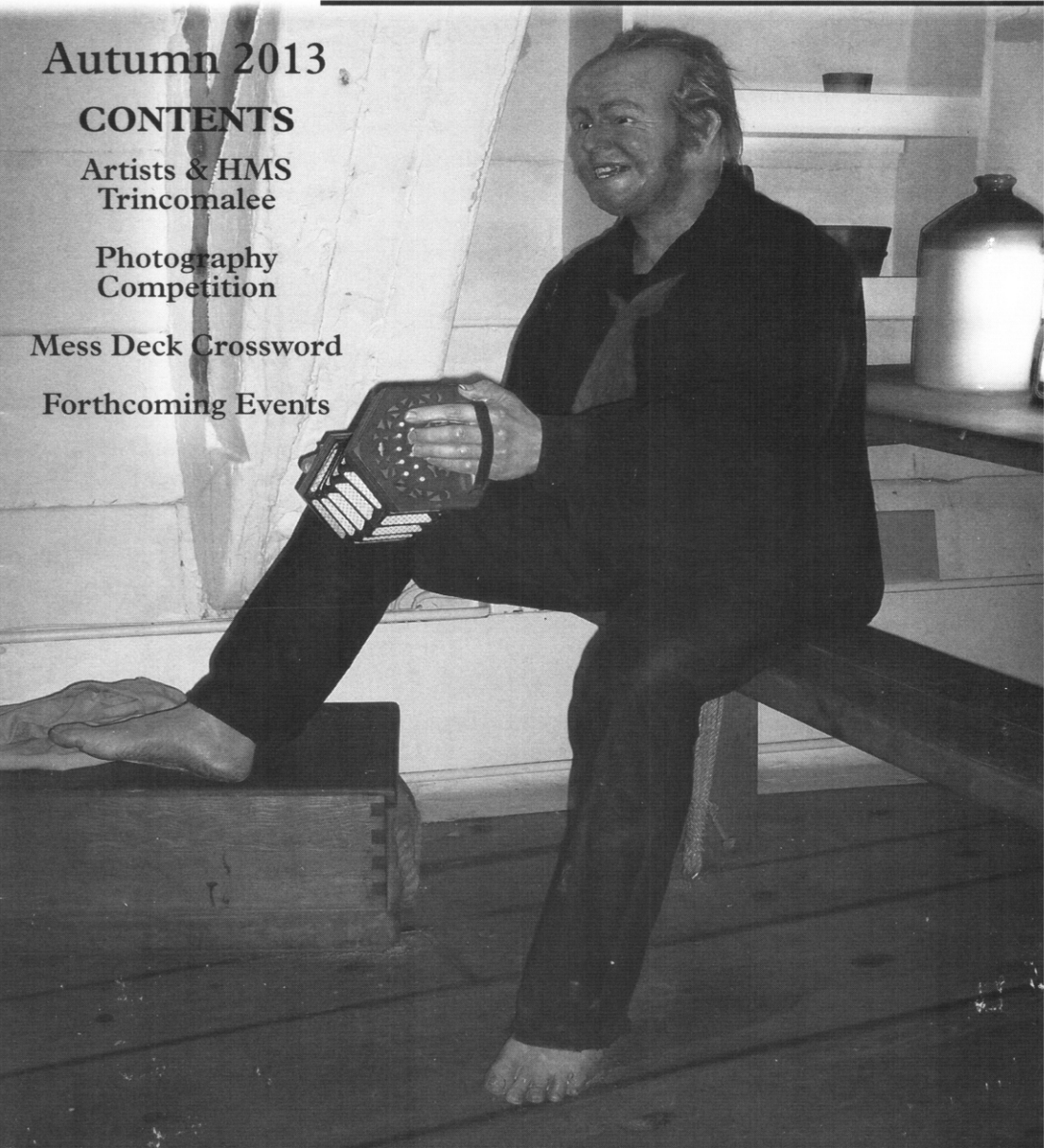
## CONTENTS

Artists & HMS  
Trincomalee

Photography  
Competition

Mess Deck Crossword

Forthcoming Events



---

# Photography Competition

---

Members are invited to submit photographs in digital form to the 'Quarterdeck' as entries in a photography competition launched at our Annual General Meeting. The closing date for entries is midnight on Sunday 12th January 2014. There are two categories:

- a) Best photograph taken of /or in the ship in 2013
- b) Best photograph taken of /or in the ship pre-2013

The committee of the Friends will select the winners at their first committee meeting after the closing date, the results will appear in the Spring 2014 edition of 'Quarterdeck'. Winning pictures will be featured in the 'Quarterdeck'.

## *Terms and Conditions:*

1. *This competition is open to members of the Friends of HMS Trincomalee only.*
2. *All information detailing how to enter this competition forms part of these terms and conditions. It is a condition of entry that all rules are accepted as final and that the competitor agrees to abide by these rules. The decision of the judges is final and no correspondence will be entered into. Submission of an entry will be taken to mean acceptance of these terms and conditions.*
3. *All entries must be received by the advertised closing time and date.*
4. *Entries should be submitted by email to:*  
*TrincomaleeCompetition@talktalk.net. They must be labelled with the entrant's name and image files must be between 1 MB and 3 MB. Entrants should include their own name and address. We regret that we will not accept postal entries.*
5. *All images submitted must be the work of the individual submitting them and must not have been published elsewhere or have won a prize in any other photographic competition. It is the responsibility of each entrant to ensure that any images they submit have been taken with the permission of the subject and do not infringe the copyright of any third party or any laws.*
6. *There is a limit of three entries to each category per member – i.e. a maximum of six photographs in total per member.*
7. *Copyright in all images submitted remains with the respective entrants. However, in consideration of their providing the Competition each entrant grants a worldwide, irrevocable, perpetual licence to the Friends of HMS Trincomalee to feature any or all of the submitted images in any of their publications, their website and promotional material.*

---

# Editorial

---

This edition of Quarterdeck is devoted to artists associated with HMS Trincomalee. We begin with John Haverfield, who was aboard our ship during its second commission in the mid-nineteenth century. We then move forward a hundred years to Harold Wyllie, and then to the recent past to two artists who have painted pictures of our ship, Francis Smitheman and Colin Bell. The latter three articles were given as talks at our Annual General Meeting on 25th September 2013.

In keeping with the artistic theme, a photographic competition was launched at the same meeting, and Friends are encouraged to take part – for the particulars see the opposite page.

We are pleased to announce that membership fees will remain unaltered for yet another year. Although the trustees elected remain unaltered, Ian Purdy has taken the post of Secretary for the year with Ruth Turner becoming the first lady Chair of the committee. Thanks were given to Ian for the many years he has held office on the committee and Ian hoped that it will not be too long before some other Friends express an interest in joining us in the management of the charity. I end with early seasonal greetings, and I am looking forward to seeing some interesting photographs.

**Hugh Turner** (*Editor*)

*Any correspondence concerning the Friends Association should be sent to:*

**The Secretary, Ian Purdy**

39 The Poplars, Wolviston, Billingham TS22 5LY  
Tel: 01740 644381 E-mail: [IanPurdy@ntlworld.com](mailto:IanPurdy@ntlworld.com)

*Correspondence and contributions for the magazine to:*

**The Editor, Hugh Turner**

Chevin House, 30 Kingfisher Close, Bishop Cuthbert, Hartlepool TS26 0GA  
E-Mail: [TrincomaleeFriends@tiscali.co.uk](mailto:TrincomaleeFriends@tiscali.co.uk)

*Membership matters directed to:*

**Membership Secretary, Tony Blades**

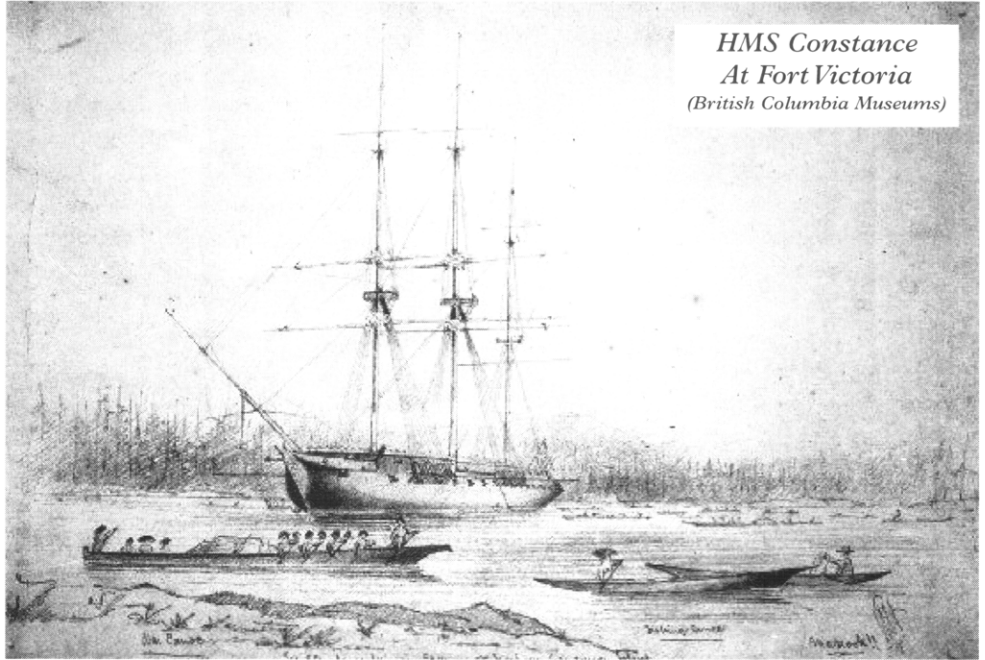
**The Friends of HMS Trincomalee,**

**Jackson Dock, Maritime Avenue, Hartlepool TS24 0XZ**

**Tel: 07951 156607 E-Mail: [membership@hms-trincomalee-friends.org.uk](mailto:membership@hms-trincomalee-friends.org.uk)**

# *Lieutenant John Haverfield on board HMS Trincomalee 1855*

On 21st August 1855 HMS Trincomalee arrived in Esquimalt Bay, near to Fort Victoria. Victoria was far from the modern 21st century city of today, and thanks to Lieutenant Haverfield we do have some sketches of what the area was like from his visit to Fort Victoria whilst attached to HMS Constance in 1848.



John Tunstall Haverfield was born in Great Torrington, 8 miles south west of Barnstaple in Devon the son of a commander in the Royal Navy. In 1848 he was attached to HMS Constance at Plymouth and travelled to Vancouver as a first lieutenant, second in command of the ship's attachment of Royal Marines. It was not unusual for an officer at that time to be very capable at drawing. For example, the Royal Engineers establishment at Chatham had courses in surveying, topographical drawing, and practical architecture.

The curriculum in one naval academy comprised of 'Navigation, Geometry, Arithmetic, English Writing, French, Drawing, Fencing and Dancing.'

In August 1848 several native Indian tribes speaking Salishan dialects, collectively known as Salish tribes, were attracted to Fort Victoria and had camped near the bastion and exchanged rifle shots. The Hudson Bay Company at that time had rule at Fort Victoria, and the commander-in-chief of the Pacific station would send the occasional frigate or sloop of war to the area for the purpose of finding spars or coal, or refreshing officers and men in the healthy climate so surprisingly similar to that of southern England.



The company traders Peter Skene Odgen and James Douglas, had previously reported the Indians aggression to the Navy and HMS Constance, a fifty gun frigate captained by Captain George Courtenay, was already in nearby Esquimalt Harbour from where Courtenay heard the shots and saw many Indians paddling towards the fort. In response he sent over four armed boats and ordered a seven gun salute from the boats, which was answered from the bastion. Then all hands, including some thirty marines, disembarked, promenaded around the fort's front yard, and returned in the boats to the frigate.

Next morning, the gunboat diplomacy in Victoria harbour continued when Courtenay landed once again, this time with 250 sailors and marines, with the ship's band playing at their head. For a whole day the naval brigade performed various drills in the fort's yard, while many of the Hudson Bay Company servants enjoyed a day off, watching the novel spectacle.



*Bivouac*  
(British Columbia Museums)

The squirmish seems to have passed without incident, although there is no written evidence. In the sketch and watercolour 'Bivouac' Haverfield portrays two peaceful Indian chiefs, one a Clallam called 'King George' the other the Songees chief Cheealthluc ('Freezy'), as well as 'Tatlea Uncle to King George', meeting or perhaps trading on friendly terms with two British officers. Nearby stands a field piece and caisson, a cooking fire, a freshly hung deer, and several carts - one carrying a cask about the size of a 45-gallon keg marked H.B.C. and no doubt containing spirits for the ensuing wilderness feast. In the background, a large group of sailors and marines lie reposed before their tents, resting feet and limbs from the day's rough march.

7 years later, in September 1855, Lieutenant Haverfield was back at Fort Victoria aboard our ship, HMS Trincomalee. He retired from the Royal Marines in 1868 and died 8 February 1885 at Westbourne Terrace, London.



In an auction listing of 28th September 2010, lot 292 was a pencil and watercolour picture by 'John Tunstall Haverfield (c. 1825-1885) of a staircase, apparently in the Royal Naval School dated 1871. The estimate was 120 to 180 pounds but it failed to sell.

Haverfield is also listed on the website of Devon County Council in their biographical dictionary of printmakers and is noted as being 'a capable amateur artist and a naval officer.'

*Hugh Turner*

## *Lieutenant Colonel Harold Wyllie*

Obviously in a moment of weakness I offered to talk about Harold Wyllie. In my searches I've discovered he appears to have been a very private man – most of what I have found is primarily from military sources ( brief and to the point ) and some artistic references.



*Wyllie in the ward room of HMS Foudroyant (bearded, fifth in from the left)*

As a cadet arrangements were made for me to visit the Foudroyant. I went out with him and once on board he disappeared into the Captain's Cabin whilst I wandered about the ship for an hour or two, then before we left he showed me a plan of how hammocks could be slung for the whole ship's crew (14 inches, 16 at the sides ). This was my only personal contact with him and he said very little.

He was born in London on 20th June 1880, his father was William Lionel Wyllie RA a very well known marine artist ( see the 42ft by 12ft "Battle of Trafalgar" panorama in the Royal Naval Museum, Portsmouth ). Harold inherited his father's love of the sea and ships particularly the development of sailing ships in maritime history and became a world expert. Thus he and his father were appointed to the committee to restore "Victory" to her "Trafalgar" state and Harold had the responsibility for the rigging, this I assume would be between 1928 and 1938. He also built a model of the "Victory" now in the Royal Naval Museum. It would seem much of his work must have been done whilst in uniform.

Now for the statistics:-

1898 He was sent to the USA as artist to the "Graphic" newspaper.

1900 He was in South Africa as a Lieutenant in the West Kent Regiment, gaining a medal and three bars.

1912 I believe the Royal Flying Corps was founded.

1914 Awarded "Pilot's Certificate no. 921" by the Royal Aero Club. From 1910 to 1914 some 1032 men were qualified by the Royal Flying Corps.

1914 to 1918 Was one of the first volunteers to transfer to the Royal Flying Corps, he commanded various squadrons both in France and the United Kingdom including the first night flying squadron. Early tasks included flying in a FE2B as observer with Lord Brabazon as pilot. A primary job was to sketch enemy positions and mark the front lines on maps. A problem was holding onto maps while sketching in an open cockpit (the FE2B had a rear engine).

1916 Granted a permanent command in the Wiltshire Regiment as a Major, he was also a Major in the Royal Flying Corps.

1919 Awarded the Order of the British Empire.

1920 Retired from the army with the rank of Lieutenant Colonel, then requalified as a pilot in the Royal Air Force.

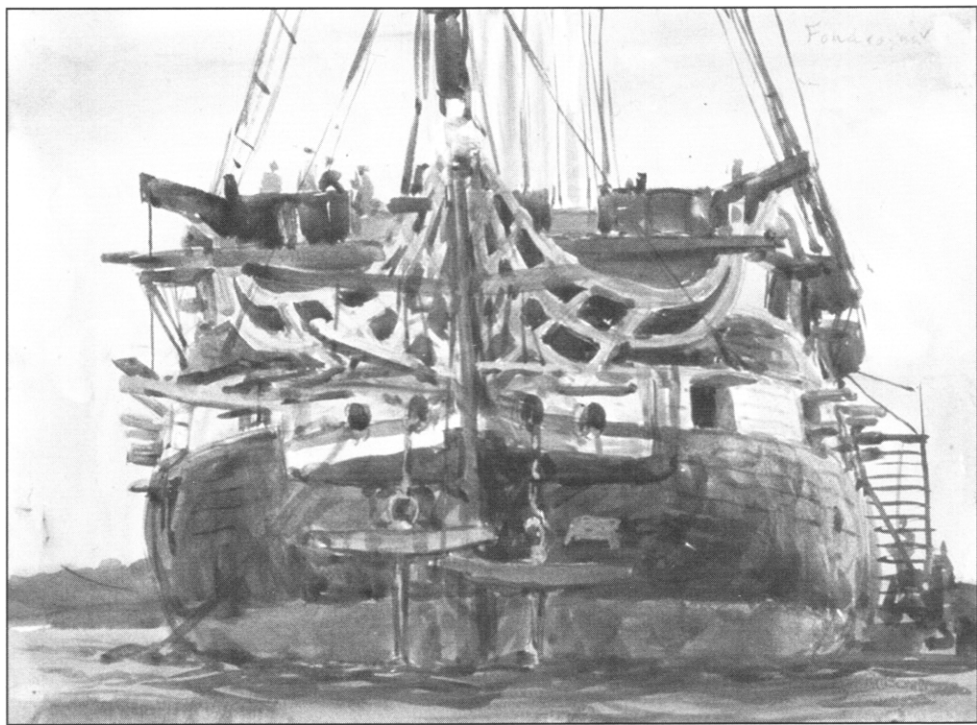
1930 25th July. Retired from the RAF as Hon. Wing Commander. Dated in the London Gazette.

1932 "Wooden Walls" :- "Implacable" and "Foudroyant" were moved to Portsmouth following the death of Geoffrey Wheatley Cobb in 1931 and Wyllie became Superintendent of both ships.

1934 He was appointed "Hon. Marine Painter of the Royal Yacht Squadron".

1940 Wyllie was recalled to the RAF and Mr Stuart Moore became Hon. Superintendent of the two ships.

1941/2 Wyllie was released from the RAF at the request of the RN to be Director of Training on HMS "Foudroyant" & "Implacable" with the rank of Lieutenant (aged 62 years) for newly entered ratings to be given instruction in communications, i.e. the "Bounty Boys". He was promoted to Lieutenant Commander at the end of the war in 1945 until the ships were decommissioned in January 1947. Thus he held senior positions in all three services – surely an almost unique achievement.



## HMS Foudroyant

*By Harold Wyllie*

1943 September 1st ( 70 years ago ) The first class of “Bounty Boys” joined the RN and the ship for five weeks initial training – a class of forty two of which I was one.

After the end of the war in 1947 the decision to scuttle the “Implacable” was made. Then to decide on the “Foudroyant”. With eight votes to six it was decided to restore the ship under the direction of Wyllie.

1949 The “Foudroyant Trust” was set up and Wyllie retired from work with the ship. He eventually retired with his artistic wife Hilary Strain to Perthshire. His great talents were widely acclaimed – painting in water colours and oils, making etchings, engravings and sculptures, exhibiting at the Royal Academy and at many Municipal Art Galleries.

He was still accepting commissions well into his nineties until he died in London on 22nd December 1973 at the age of 93. A man of many talents and even more achievements, but of little recognition in today's world.

*Laurie Merrin*

# *Stanley Francis Smitheman*



Stanley Francis Smitheman is a distinguished marine artist who has been compared to "his illustrious predecessor, Turner".

He has an extensive portfolio, but is best known for his series of works done in pursuit of themes including Sea Battles, the Port of London, Arctic Exploration and Working Ports. His lengthy studies as a painter included a scholarship to Paris, and a degree in the history of European Art at the Courtauld Institute, University of London. His career has included lecturing at graduate level, and he spent a number of years designing for the theatre.

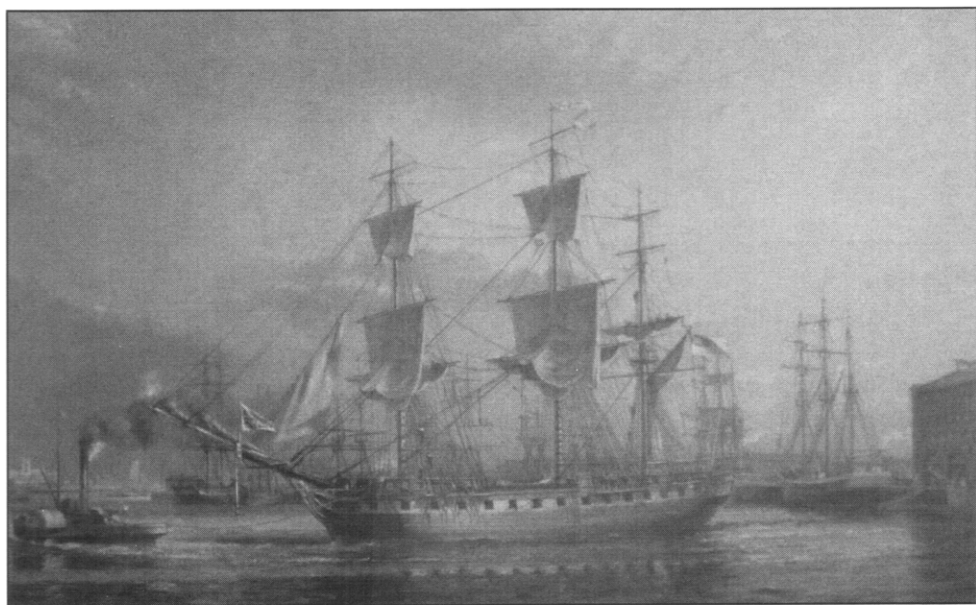
He was awarded the L'artiste d'Honneur in France and the local paper stated that "one finds all the world of the seas in his works, the ports, the craft, the human activities on board, tempestuous seas and arctic wastes".

He is well travelled, and has shown works in France, Norway, Sweden and the USA, as well as in his native England. As a result of his undoubted talent and fame, he has been commissioned by many key institutions to paint their product, as it were. For example, Mott Macdonald (international Civil Engineers) commissioned "Victory Leading the Line at Trafalgar" to mark the merging of two companies. The subsequent print had proved to be a best seller at the Royal Naval Museum in Portsmouth. Smitheman was also commissioned by the Trustees of SS Great Britain to paint the ship arriving in New York on her maiden voyage in 1852.

The Trustees of HMS Warrior invited Smitheman to paint the ship escorting the Royal Yacht carrying the future Queen Alexandra to marry the future Edward the Seventh. Two things of interest to us – the Warrior of course, which was restored in Hartlepool; and this is also the Royal Yacht for which we have the barge boards. The first print of a limited edition was presented to the present Princess Alexandra on board the Warrior.

Two commissions followed from the Royal Mint - “The Decisive Action” to commemorate the two hundredth anniversary of the Battle of Trafalgar, and “SS Great Britain arriving at Liverpool” in 1861 – and both paintings were successfully sold at auction, a first for the Royal Mint.

Another commission of interest to us was from Sweden to paint the Vasa, a ship we have had a talk on a year or two back, but I will finish with the painting that carries most interest for us, “HMS Trincomalee visiting Hartlepool in 1862”.



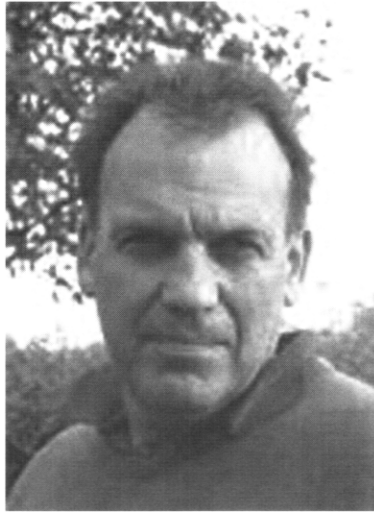
*(Smitheman/Trincomalee Trust)*

The painting shows the Trincomalee making a courtesy visit to Hartlepool, either for training or recruitment purposes, thus she shows a Pilot Jack at the bowsprit, the sails are carefully trimmed and the crew are hastening to get the “Ship shape and Bristol fashion”. The painting was created in cooperation with the Trincomalee Trust, using plans of the ship, and the artist constructed a model of the port of West Hartlepool from 1860 using maps to establish what could then have been seen from Jackson Dock. Those with good eyes will spot a beautifully illuminated St. Hilda's Church in the background.

*Ian Purdy*



# David C Bell



The most recent print that has appeared in the ship shop is of HMS Trincomalee in dry dock here at Hartlepool. This is from a watercolour by the artist David Bell.

David's early life has been very much associated with ships. He was born in Lincolnshire, not far from the river Humber, and at Hull he attended the Trinity House Navigation School. Following this he began a career at sea in the Merchant Navy as a navigating cadet.

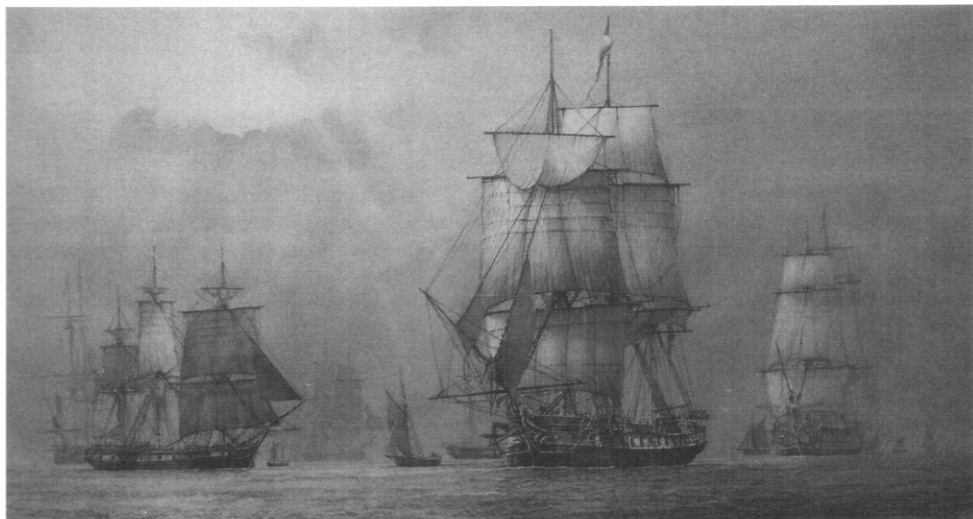
It was during his time at sea that David spent time drawing and painting, which led to him developing the desire to pursue painting full time. After nine years sailing around the world as a ship's navigator he parted company with the sea, becoming an art student, and after gaining a Bachelor of Arts degree in Art he fulfilled his ambition to be a marine artist.

David has had successful exhibitions and books of his work published, including his third book which reflected his deep interest in maritime history by looking at the life and times of notable British ships and sailors, from the times of James Cook to Ernest Shackleton. This book is full of observations in words and pictures.

In 1984 he was commissioned by the military to travel to the Falkland Islands to produce several commemorative paintings. Many of his paintings are found in important collections, including the Queen's Collection.

An earlier watercolour of HMS Trincomalee is of her in full sail, portraying her coming into Portsmouth. With his experience of the sea with all its moods, he is able to produce atmospheric paintings. Although best known for his maritime art, his second love is railway engines, he also does architectural, aviation and landscape paintings.

*Ruth Turner*



HMS Trincomalee at Portsmouth  
(Bell/Trincomalee Trust)

## Mess Deck Crossword Solution

Summer 2013

Solution:

F	I	A	S	C	O		S	C	H	A	K	O	F	F
A		W		R				H		B		R		U
S	L	A	V	I	C		P	A	L	L	A	D	A	S
T		K		M				L		E		A		I
F	R	E	D	E	R	I	C	K	S			D	I	D
O		N		A		N				C		N		N
O	C	E	A	N	O	G	R	A	P	H	Y			
D	D		W		O		P		I		P		C	
				B	A	T	T	L	E	O	F	A	L	M
F		P		R				R		F		A		P
A	W	A	Y		G	R	E	Y	H	O	U	N	D	S
T		L		A		I				N		T		T
H	A	L	F	M	A	S	T			V	I	R	A	G
O		A		U		K				E		I		N
M	I	S	T	R	E	S	S			F	R	A	N	C

### ACROSS

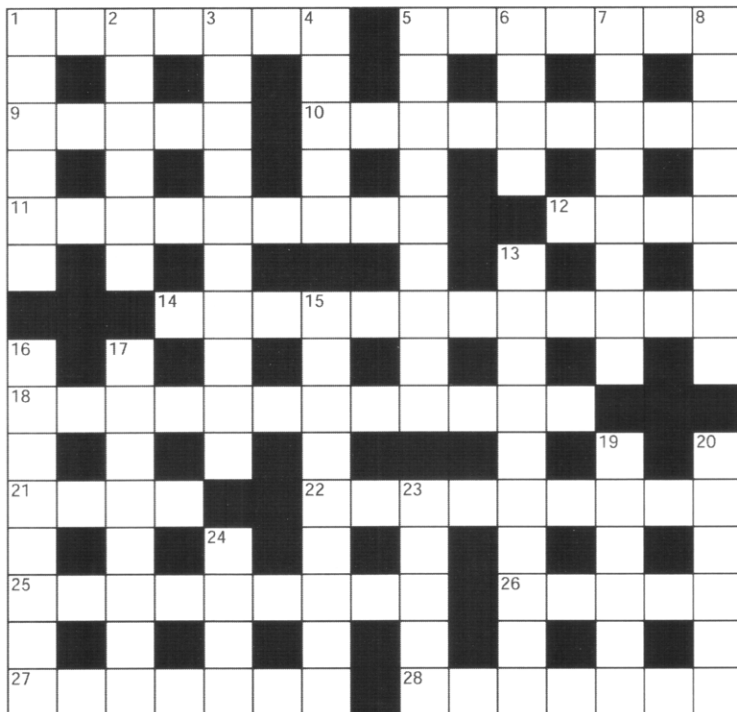
- 1 Huge mess (6)
- 4 Fort near Petropavlovsk (8)
- 9 The Tsar wished to protect these Christians (6)
- 10 Frigate in Russian Pacific squadron in 1854 (8)
- 11 Captain of HMS Amphitrite (10)
- 13 Ship in Bruce's allied squadron 1855 (4)
- 15 Ocean environment study (12)
- 19 Land-based conflict of 1854 (6,2,4)
- 22 Gone (4)
- 23 Fast dogs (10)
- 25 Point in the middle of ship's mast (4,4)
- 27 Marshal commanded this paddle-steamer (6)
- 28 Nelson's was Lady Hamilton (8)
- 29 Country in dispute with Russia in 1850s (6)

### DOWN

- 1 Quick meal (4,4)
- 2 Roused (8)
- 3 Conflict of 1854 to 1856 (7,3)
- 5 Fundamentally different from cheese (5)
- 6 Type of seaman (4)
- 7 To order officially (6)
- 8 Joining together (6)
- 12 Block of metal (5)
- 14 A low cupboard (10)
- 16 Mimicry (5)
- 17 Common lawn weed with green spike (8)
- 18 Can form the top of a wall (8)
- 20 Six feet of water (6)
- 21 Alternative to 10 across (6)
- 24 Perils (5)
- 25 21 down was sent to this river (4)

# Mess Deck Crossword

Autumn 2013



## ACROSS

- 1 Site of a Royal Engineers establishment in the mid-nineteenth century (7)
- 5 Wyllie sketched in an open one (7)
- 9 Wyllie held this rank in 1916 (5)
- 10 Future Queen carried to England aboard the Royal Yacht (9)
- 11 Reveals (9)
- 12 After awhile (4)
- 14 Form of Church government (12)
- 18 Wyllie inherited this from his father (4,2,3,3)
- 21 Sought for around Fort Victoria by the occasional frigate (4)
- 22 One who slips away (9)
- 25 Fitting (9)
- 26 Be supreme (5)
- 27 Part of a Naval Academy's curriculum (7)
- 28 Smitheman designed for this (7)

## DOWN

- 1 Farce (6)
- 2 Alter (6)
- 3 Smitheman depicted HMS Trincomalee here (10)
- 4 Defensive trenches (5)
- 5 Castle (5,4)
- 6 Shellfish (4)
- 7 Overly concerned (8)
- 8 On HMS Foudroyant Wyllie was Director of this (8)
- 13 Hippodrome (10)
- 15 Locating (9)
- 16 Evoked (8)
- 17 Subject matter for some of David Bell's art (8)
- 19 Free from moorings (6)
- 20 Smitheman has shown pictures here (6)
- 23 Used to aim a gun (5)
- 24 Type of Hindu ascetic (4)

*Solution next issue*

# APPLICATION FORM

## to join

## THE FRIENDS OF HMS TRINCOMALEE

Membership categories and twelve monthly subscriptions:  
(Fixed until 24th September 2014)

Adult	£20.00
Concessionary *	£15.00
Joint Adult	£35.00
Joint Concessionary *	£27.00
Family Group +	£45.00

\* Children, students, senior citizens and those unwaged

+ Two adults and up to three children in a family

*Please complete, detach and return this form to:*

The Friends of HMS Trincomalee  
Jackson Dock, Maritime Avenue, Hartlepool, TS24 0XZ

**MEMBERSHIP CARDS ARE NOT TRANSFERABLE**

### ***YOUR DETAILS:***

Title ..... Surname .....

First Names .....

Address .....

.....

..... Post Code .....

Tel. ....

Membership Category .....

*Cheques made payable to 'HMS Trincomalee Trust'*

AMOUNT .....

☐

GIFT AID DECLARATION. As a UK taxpayer I would like the HMS Trincomalee Trust to claim back the tax on this and all future donations.

*Please tick the box.*

SIGNATURE .....

# THE FRIENDS OF HMS TRINCOMALEE

## *Autumn to Spring Events 2013 to 2014*

- |                          |  |
|--------------------------|--|
| 27 November<br>Wednesday | <i>Wine tasting</i><br><i>A light hearted, non-commercial, "sippings", appraisal and quiz centred on six different wines</i> |
| 16 December<br>Monday    | <i>Carols in the Captain's cabin</i>   |
| 19 February<br>Wednesday | <i>"Ships' Figureheads" talk</i>   |
| 26 March<br>Wednesday    | <i>"A seven month voyage in the Booth Line Dominic"</i><br><i>Captain Sandy Kinghorn</i>                                     |
| 30 April<br>Wednesday    | <i>"Admiral James Saumarez"</i><br><i>Keith Atkinson</i>   |

*Unless otherwise stated all events take place in the Captain's Quarters on board HMS Trincomalee at 7.00pm – Talks starting at 7.30pm after refreshments*

These events are free for Friends, with guests charged £1 each.

Friends receive free entry to HMS Trincomalee and Hartlepool's Maritime Experience for one year, can attend talks and presentations on board, receive the Quarterdeck magazine which is published three times a year and receive a 10% discount on items in the Ship Shop.

An application form is overleaf.